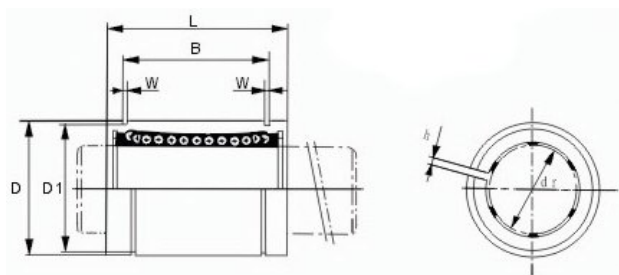
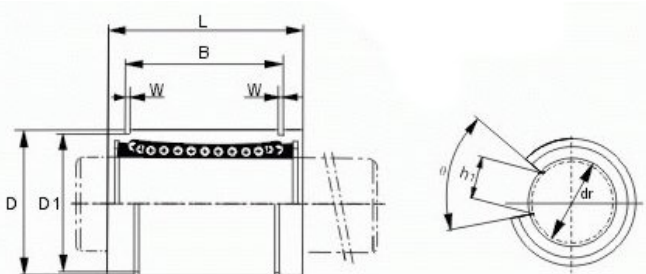


# Casquillo de rodamiento lineal LM..AJ / LM..OP



Modelo	Nº de bolillas	Dimensiones principales											Escencia- dad	Cargas básicas	
		Diam. Interno		Diam. externo		Largo		Raunura ext. Para chaceta			W	h		c(kgf)	Co(kgf)
		dr	Tol.	D	Tol.	L	Tol.	B	Tol.	D1					
LM6AJ	4	6		12	0	17		13.5		11.5	1.1	1		21	27
LM8SAJ	4	8		15	0.011	19		11.5		14.3	1.1	1		18	23
LM8AJ	4	8		15		24		17.5		14.3	1.1	1		27	41
LM10AJ	4	10	0	19		29	0	22	0	18	1.3	1	0.012	38	56
LM12AJ	4	12	-0.009	21	0	30	-0.2	23	-0.2	20	1.3	1.5		42	61
LM13AJ	4	13		23	-0.013	32		23		22	1.3	1.5		52	79
LM16AJ	5	16		28		37		26.5		27	1.6	1.5		79	120
LM20AJ	5	20		32		42		30.5		30.5	1.6	1.5		88	140
LM25AJ	6	25	0	40	0	59		41		38	1.85	2	0.015	100	160
LM30AJ	6	30	-0.01	45	-0.016	64		44.5		43	1.85	2.5		160	280
LM35AJ	6	35	0	52	0	70	0	49.5	0	49	2.1	2.5		170	320
LM40AJ	6	40	-0.012	60	-0.019	80	-0.3	60.5	-0.3	57	2.1	3	0.02	220	410
LM50AJ	6	50	0	80	0	100		74		76.5	2.6	3		390	810
LM60AJ	6	60	-0.015	90	-0.022	110		85		86.5	3.15	3	0.025	480	1020



Modelo	Nº de bolillas	Dimensiones principales											Escencia- dad	Cargas básicas		
		Diam. Interno		Diam. externo		Largo		Raunura ext. Para chaceta			W	h1		θ	c(kgf)	Co(kgf)
		dr	Tol.	D	Tol.	L	Tol.	B	Tol.	D1						
LM10OP	3	10		19		29		22		18	1.3	6.8	80°		38	56
LM12OP	3	12	0	21	0	30		23		a20	1.3	8	80°		42	61
LM13OP	3	13	-0.009	23	-0.013	32	0	23	0	22	1.3	9	80°	0.012	52	79
LM16OP	4	16		28		37	-0.2	26.5	-0.2	27	1.6	11	80°		79	120
LM20OP	4	20		32		42		30.5		30.5	1.6	11	60°		88	140
LM25OP	5	25	0	40	0	59		41		38	1.85	12.5	60°	0.015	100	160
LM30OP	5	30	-0.01	45	-0.016	64		44.5		43	1.85	15	60°		160	280
LM35OP	5	35		52		70	0	49.5	0	49	2.1	17.5	60°		170	320
LM40OP	5	40	0	60	0	80	-0.3	60.5	-0.3	57	2.1	20	60°	0.02	220	410
LM50OP	5	50	-0.012	80	-0.019	100		74		76.5	2.6	25	60°		390	810
LM60OP	5	60	0/-0.015	90	0/-0.022	110		85		86.5	3.15	30	60°	0.025	480	1020

artículos disponibles en stock permanente. Otros modelos a pedido.